



conectores industriales
industrial connectors

PRODUCTOS FRANCESES
FRENCH PRODUCTS

Hasta 800 Amp.
Hasta 24 kV
IP66/67 - IK10
Up to 800 Amp.
Up to 24 kV
IP66/67 - IK10

Sistema de conexión para equipos rodantes
Rolling stock stinger system



Conexión entre vagones de 500 Amp.
500 A. coach connection



Conectores Ferroviarios
Connectors for railways

ELLOS CONFÍAN EN NOSOTROS
THEY RELY ON US



Suministrador OTAN n° F8992
NATO supplier n° F8992



TODOS NUESTROS PRODUCTOS ALL OUR PRODUCTS

Bases y clavijas metálicas 3PX -> 500 Amp.
Metal sockets & plugs 3PX -> 500 A

3PX

1 kV max.

250 A

IP 67 - IK10



Clavija recta
Straight plug

Base para encastrar
Panel mounting Socket

Conector para el sistema de alimentación ferroviaria,
según la norma EN 50546 - 125 Amp. - 400V
Connector for the railway supply system,
According to EN 50546 - 125A - 400V

3PX3

400 V max.

125 A

IP 67 - IK10



Base para encastrar
3 + N + 4P
Panel mounting Socket

Clavija codeada
3 + N + 4P
Angled plug

**Nuevo!
New!**

Bases y clavijas metálicas 3PV -> 500 Amp.
Metal sockets & plugs 3PV -> 500 A

3PV

Hasta 1 kV max.
Up to 1 kV max.

500 A max.

IP 67 - IK10

Potencia y señalización
Power & signal



Clavija recta
Straight plug

Base para encastrar
Panel mounting Socket

Otros conectores
Others connectors

3PXU

Hasta 1,5 kV max.
Up to 1,5 kV max.
800 A max.

IP 67 - IK10



Base para encastrar
Panel mounting Socket

Clavija recta
Plug

Bases y clavijas con poder de corte y resistentes a
la corrosión
Sockets & plugs with switching capacity and
corrosion resistance

3PS

Hasta 1 kV max.
Up to 1 kV max.

250 A max.

IP 67 - IK08



Base
Socket

Clavija
Plug



PROCONNECT ESPAÑA

Gorka Uribe

Delegado Comercial España Spanish
Sales Manager

proexsa@proexsa.net

Tfno. : 94 480 03 71

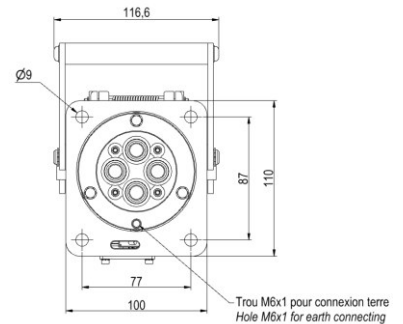
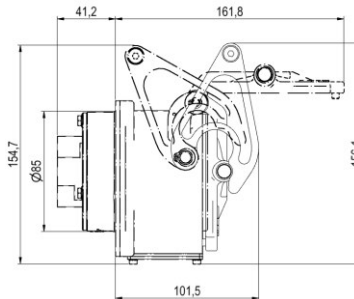
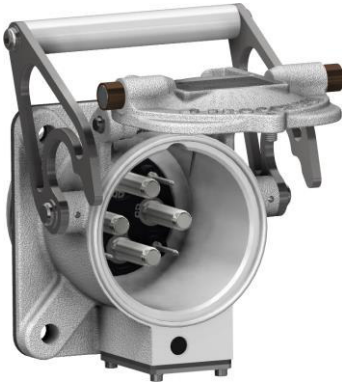
**NE PAS DECONNECTER
EN CHARGE
DO NOT DISCONNECT ON
LOAD**

Intensité. / <i>Amp.</i> max.	125A
Tension / <i>voltage</i> max.	400 V AC/DC
Contacts max.	4P+4p
Cable section max.	35mm ²
Cable section pilotes	2,5mm ²
Raccordement / <i>Terminations</i>	à sertir / <i>To crimp</i>
Cable diameter max.	38,5 mm
Carcasse embase / <i>socket Casing</i>	Cast aluminium
Carcasse fiche / <i>Plug casing</i>	Cast aluminium
Contacts	Cuivre argenté / <i>silver plated copper</i>
Isolant / <i>Insert</i>	PBT, complying EN 45545-2
Visserie / <i>Fastenings</i>	Inox / <i>Stainless steel</i>
Verouillage / <i>Locking</i>	par bras levier / <i>Cam push-pull device</i>
Temperature	- 40° + 120°c
BS	96 H
Ind. protection	IP67 – IK10
Standards	EN 50546

**CONNECTEUR POUR SYSTÈME EXTERNE D'ALIMENTATION TRIPHASEE DES VEHICULES FERROVIAIRES
CONNECTOR FOR SHORE (EXTERNAL) SUPPLY SYSTEM FOR RAIL VEHICLE**

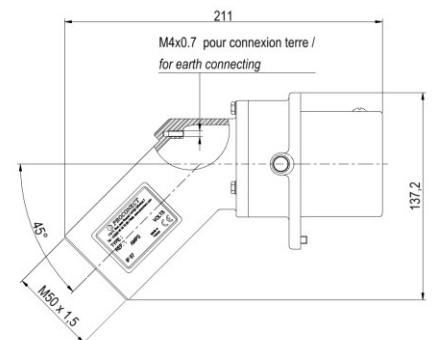
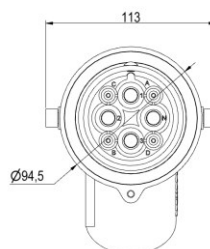
**EMBASE MALE A ENCASTRER
PANEL MOUNTING MALE SOCKET**

POIDS / WEIGHT : 1,23 KG

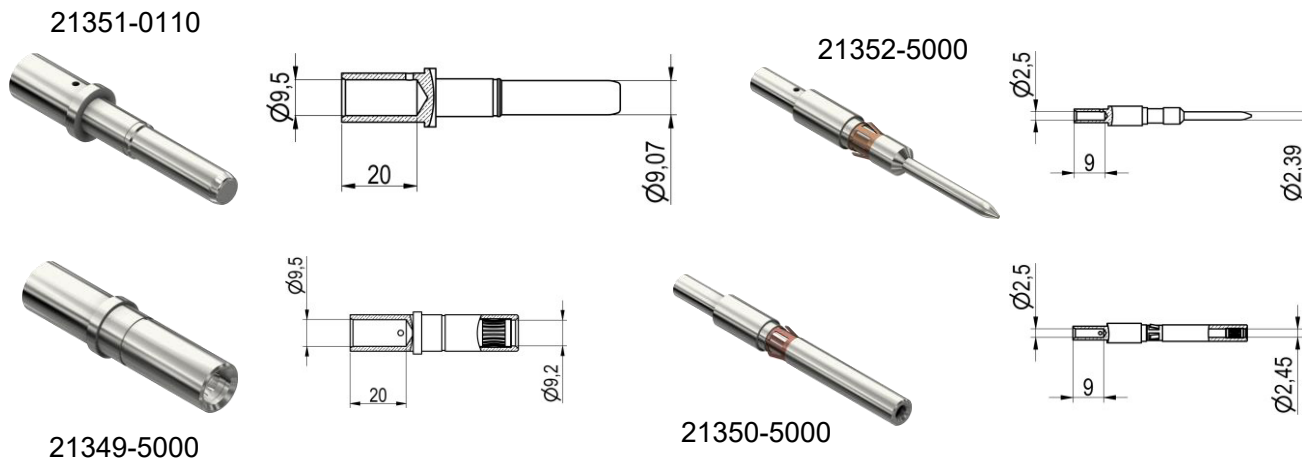


**FICHE COUDEE FEMELLE
ANGLED FEMALE PLUG**

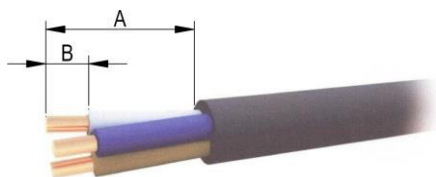
POIDS / WEIGHT : 0,96 KG



Dimensions des contacts
Contact dimensions



Taille maximum des câbles et conducteurs
Maximum conductor and cable sizes

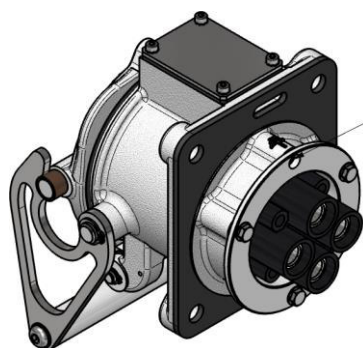


Ø cable (mm)		Longueur de dégainage <i>Sheathing stripping length</i> (mm) A	Longueur de dénudage <i>Insulation stripping length</i> (mm) B
Min	Max		
17	40	150	20

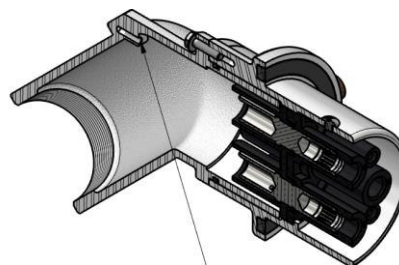
Outil recommandé (phases):
pince à sertissage hexagonal
type Mecattraction ES-125
Recommended tool :
hexagonal crimping tool type
Mecattraction ESC-125

Outil recommandé for pilot pins:
CEMBRE HN1

Raccordement à la terre
Earth connection

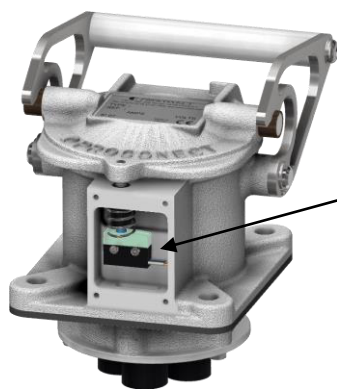


Trou M6x1 pour raccordement à la terre /
Hole M6x1 for earth connecting



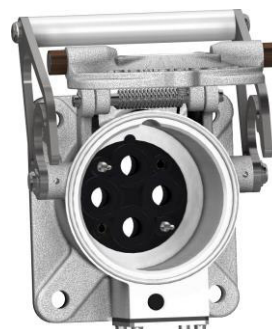
Trou M4x0,7 pour raccordement à la terre /
Hole M4x07 for earth connecting

OPTION

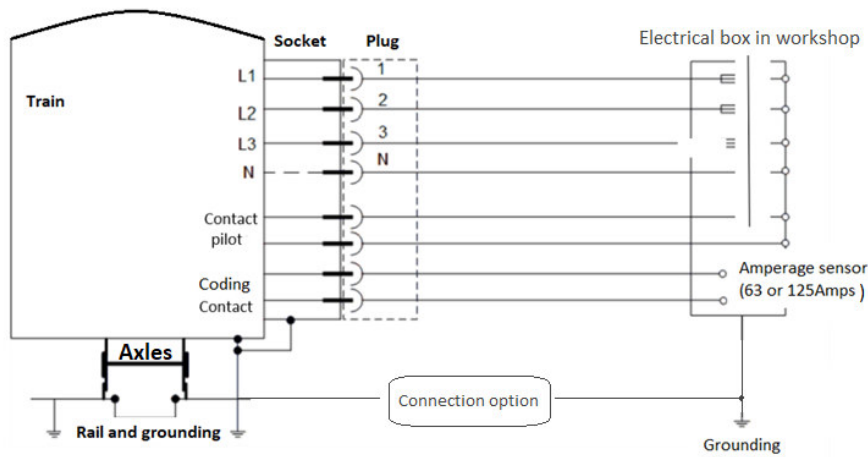
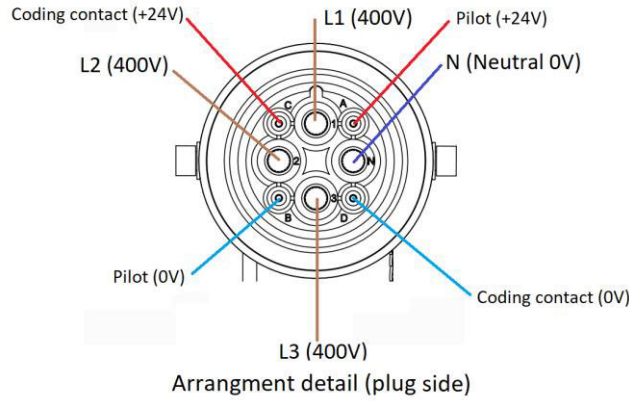


Microswitch activé par
l'insertion de la fiche ou par
l'ouverture/fermeture du
couvercle
*Microswitch activated by the
insertion of the plug or the
opening/closing of the cover*

Boite de repos
Dummy socket



Wiring & installation



Wiring diagram of the 63 & 125Amps connections.

