



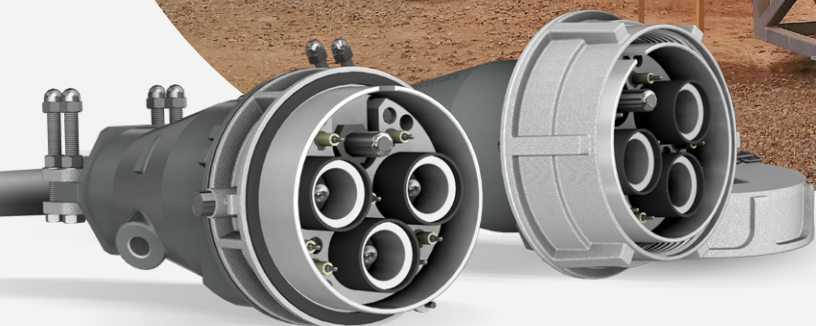
# PROCONNECT<sup>®</sup>

 industrial connectors



# mines

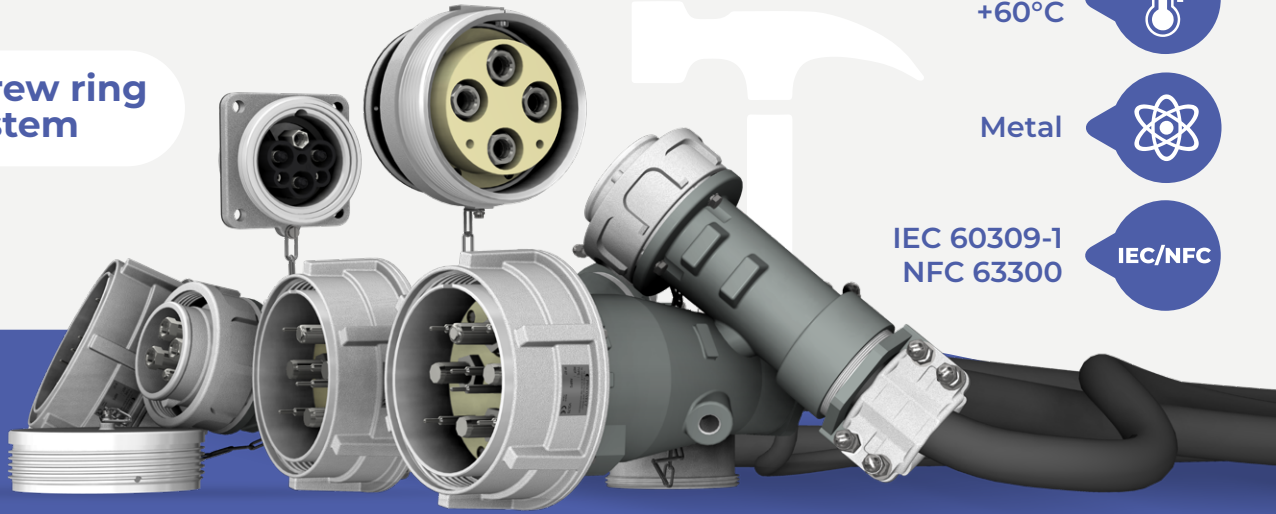
extraction equipment  
power supply



feb. 2025

# 3PV connectors

 Screw ring system



IK10



IP67



-30°  
+60°C



Metal



IEC 60309-1  
NFC 63300



**3PV4**  
max. 250 A  
1,1 kV



Socket  
130x130x143  
Plug  
288x130x130



Socket 1,7 kg  
Plug 2,3 kg



Cable section  
95 mm<sup>2</sup> max.  
Pilot section  
2,5 mm<sup>2</sup> max.



**3PV5**  
max. 500 A  
1,1 kV



Socket  
158x158x160  
Plug  
396x155x155



Socket 3,1 kg  
Plug 4,7 kg



Cable section  
240 mm<sup>2</sup> max.  
Pilot section  
6 mm<sup>2</sup> max.



**3PV6**  
max. 800 A  
1,1 kV



Socket  
221x221x160  
Plug  
514x236x236



Socket 6 kg  
Plug 8 kg



Cable section  
300 mm<sup>2</sup> max.  
Pilot section  
2,5 mm<sup>2</sup> max.

## type



**Socket**  
Stationary connector wall-mounted or on a cabinet.



**Plug**  
Mobile connector.



**Cable coupler**  
Mobile socket to extend an electrical circuit.



**Appliance inlet**  
Stationary connector to connect a cable coupler in.



**Options**  
Plug cap, optical fiber, tools, cabinets...

# electrohydraulic grabs



IK10



IP67



Socket  
130x130x143  
Plug  
228x130x130



-30°  
+60°C



Socket 1,5 kg  
Plug 1,7 kg



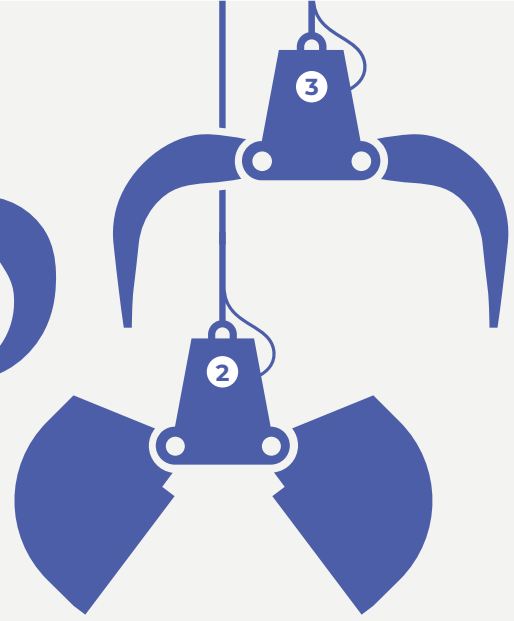
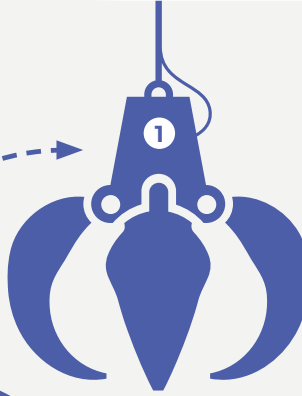
Metal



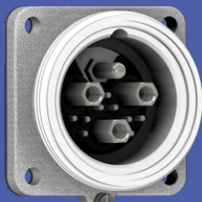
IEC 60309-1  
NFC 63300



Connectors for  
grab-integrated  
electrohydraulic  
pumps



- 1 Orange-peel grab
- 2 Clamshell grab
- 3 Tong grab

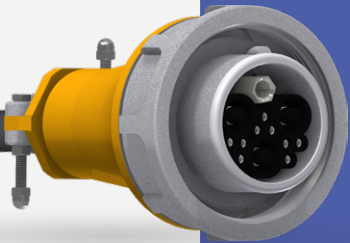


**3PV4**  
variation  
max. 200 A  
1,1 kV



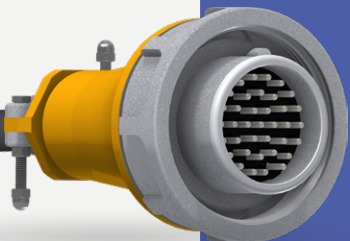
Screw ring  
system for strong  
and effortless  
connection

Various  
options  
available (plug  
cap, wiring, etc)



**9 pilots** | max. 200 A  
1,1 kV

Contacts: 3 Phases + Earth + 9 pilots  
Cable section: 70 mm<sup>2</sup> max.  
Pilot section: 2,5 mm<sup>2</sup>



**37 poles** | max. 30 A  
500 V

Contacts: 37 Phases  
Cable section: 1,5 / 6 mm<sup>2</sup>

# 3PX connectors



Cam  
push/pull  
system



IK10



IP67



-30°  
+60°C



Metal



IEC 60309-1  
NFC 63300

IEC/NFC



**3PX4**  
max. 250 A  
1,1 kV



Socket  
158x218x313  
Plug  
332x134x102



Socket 2,5 kg  
Plug 2,1 kg



Cable section  
95 mm<sup>2</sup> max.  
Pilot section  
2,5 mm<sup>2</sup> max.

**3PX5**  
max. 500 A  
1,1 kV



Socket  
200x315x383  
Plug  
466x168x145



Socket 5,3 kg  
Plug 4,9 kg



Cable section  
240 mm<sup>2</sup> max.  
Pilot section  
6 mm<sup>2</sup> max.

**3PX6**  
max. 800 A  
1,1 kV



Socket  
264x363x425  
Plug  
552x236x203



Socket 8 kg  
Plug 8,2 kg

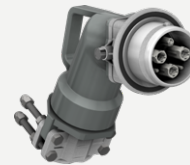


Cable section  
300 mm<sup>2</sup> max.  
Pilot section  
2,5 mm<sup>2</sup> max.

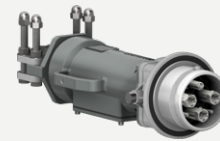
## type



Socket  
Stationary connector  
wall-mounted or on a  
cabinet.



60° angled plug  
Mobile connector  
(only for 3PX4 & 3PX5).



Plug  
Mobile connector.



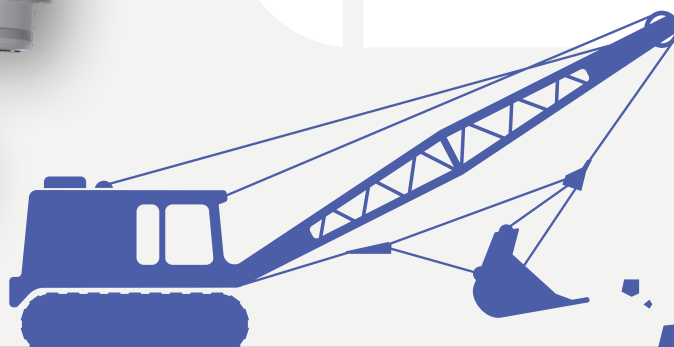
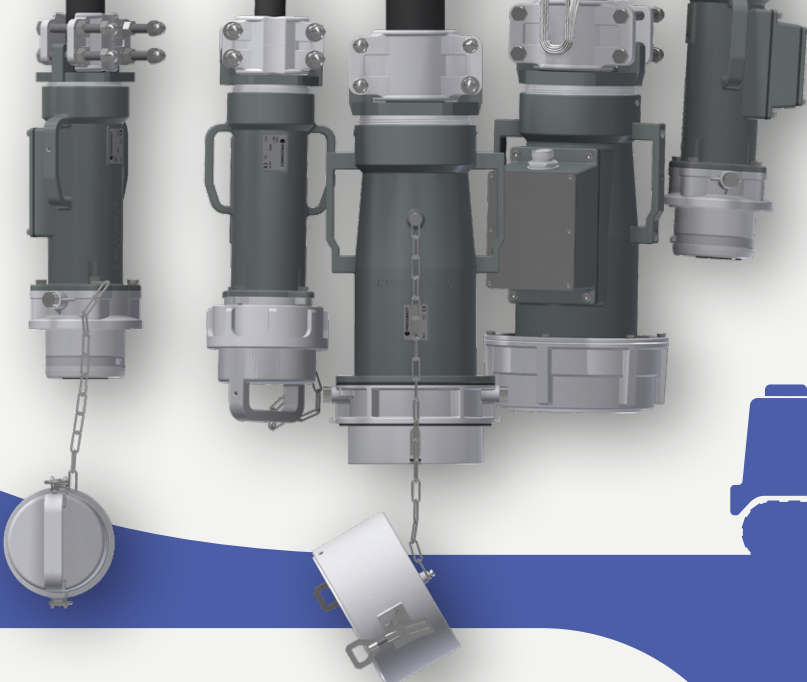
Cable coupler  
Mobile socket to  
extend an electrical  
circuit.



Options  
Plug cap,  
optical fiber,  
locks, live end  
caps, cabinets...

# MV connectors

for extraction  
equipment power  
supply up to 24 kV



## heavy-duty applications

Our range of connectors with higher voltage for heavier extraction equipment or processing equipment.

### 3PV5/3PX5 MV

max. 350 A  
7,2 kV

Cable section  
185 mm<sup>2</sup> max.  
Pilot section  
2,5 mm<sup>2</sup> max.



### 3PV6/3PX6 MV

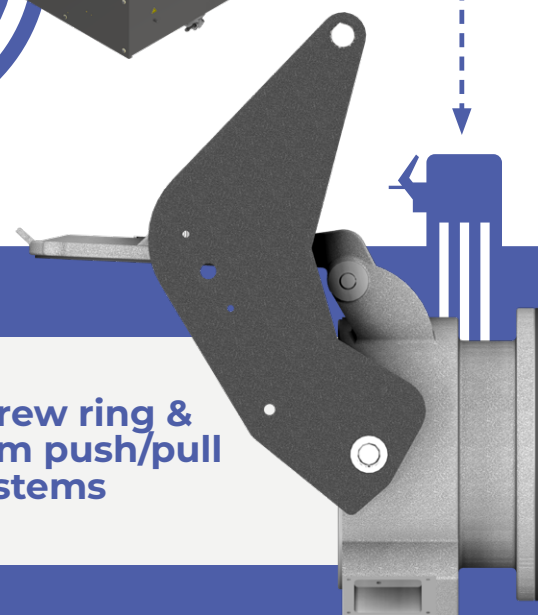
500 A / 320 A  
12 kV / 24 kV

Cable section  
240 mm<sup>2</sup> max.  
Pilot section  
2,5 mm<sup>2</sup> max.



## connection boxes

Electrical cabinets  
available on  
request.



Screw ring &  
cam push/pull  
systems

# others

## 3PS connectors

Connectors with integrated AC23 breaking capacity, suitable for a wide range of environments and frequent use.



**3PS16**

16/30 A  
1 kV



**3PS32**

32/50 A  
1 kV



**3PS63**

63/90 A  
1 kV



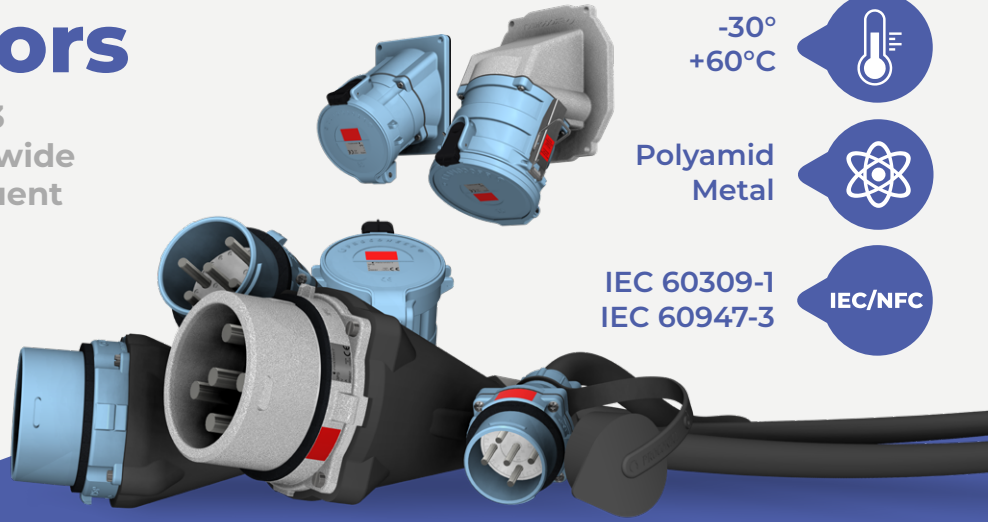
**3PS125**

125/150 A  
1 kV



**3PS200**

200/250 A  
1 kV



IK8-9



IP66



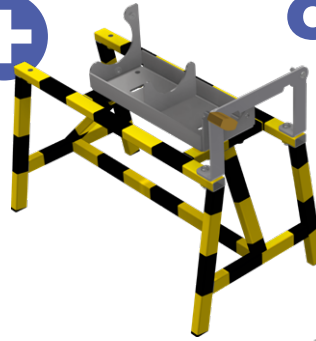
-30°  
+60°C



Polyamid  
Metal

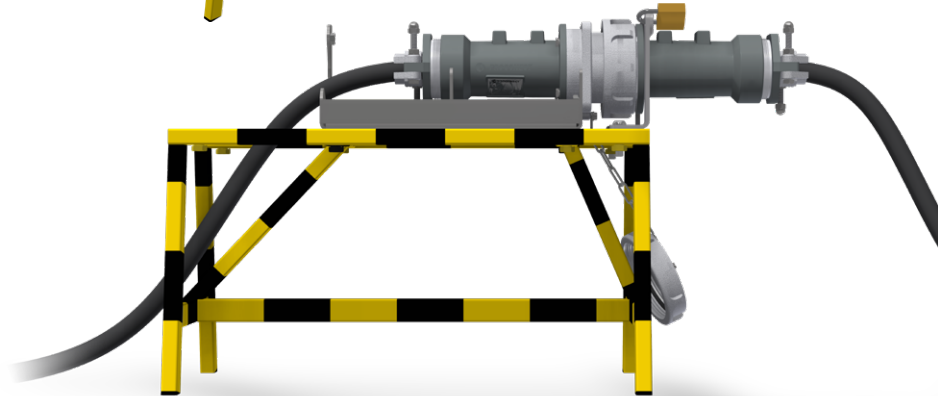


IEC 60309-1  
IEC 60947-3



## cable coupler cradle

Stainless steel cradle optimizing the use and lifetime of 3PV/3PX connectors and cables.



## wiring

Pre-wiring available on request.



This documentation is not contractual. Items shown are subject to availability. PROCONNECT reserves the right to interrupt production or modify specifications without notice.

2025 PROCONNECT

All rights of reproduction, adaptation and translation reserved for all countries.

 **PROCONNECT®**

7-9-11, rue Jean ROUXEL  
ZAC de la Pentecôte - LOT N°12-13  
44700 ORVAULT - FRANCE

Tel.: +33(0) 240 163 560  
contact@proconnect.com  
www.proconnect.com

PROCONNECT España. Tfno.: 94 480 03 71 - proexsa@proexsa.net - www.proexsa.net